

Name: Key

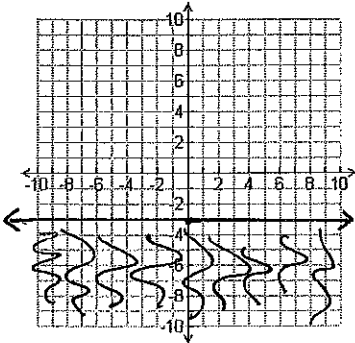
Class: _____

Date: _____

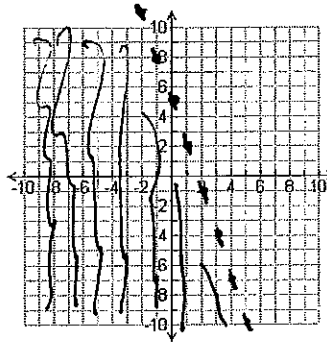
Copy of 2-8: Graphing Linear and Absolute Value Inequalities (Practice)

Graph each inequality.

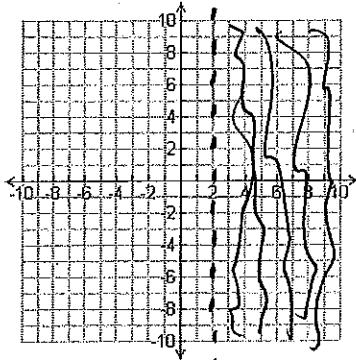
1. $y \leq -3$



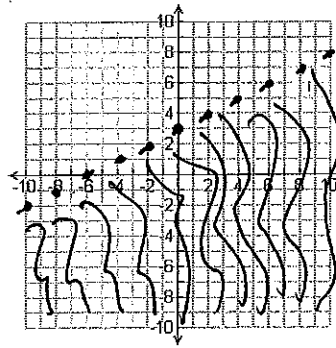
4. $y < -3x + 5$



2. $x > 2$

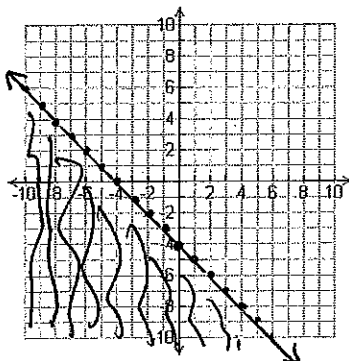


5. $y < \frac{1}{2}x + 3$



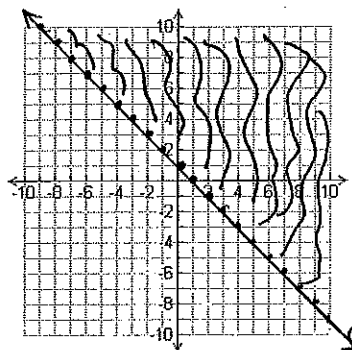
3. $x + y \leq -4$

$y \leq -x - 4$



6. $y - 1 \geq -x$

$y \geq -x + 1$



Name: _____

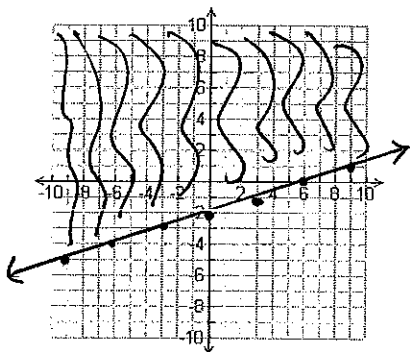
Class: _____

Date: _____

Copy of 2-8: Graphing Linear and Absolute Value Inequalities (Practice)

7. $x - 3y \leq 6$

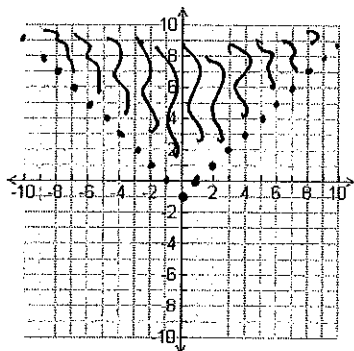
$y \geq \frac{1}{3}x - 2$



8. $y > |x| - 1$

Vertex

$(0, -1)$



9. $y > -3|x + 1| - 2$

Vertex

$(-1, -2)$

