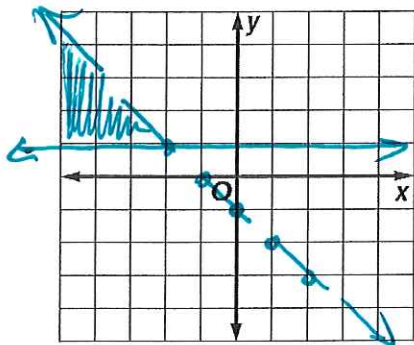


# 3-2 Practice HW

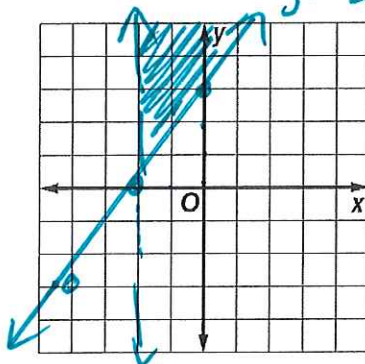
## Solving Systems of Inequalities by Graphing

Solve each system of inequalities by graphing.

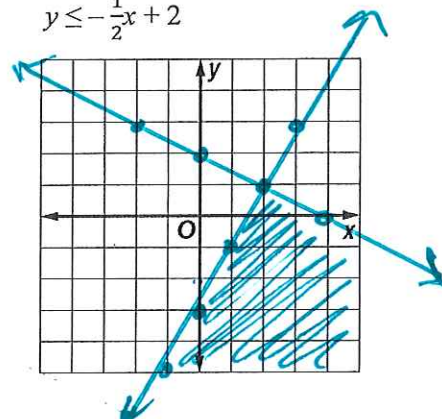
1.  $y + 1 < -x \Rightarrow y < -x - 1$   
 $y \geq 1$



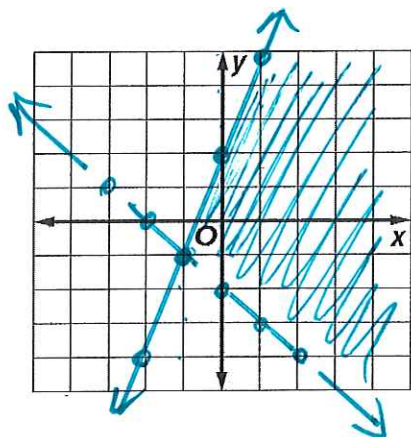
2.  $x > -2$   
 $2y \geq 3x + 6 \Rightarrow y \geq \frac{3}{2}x + 3$



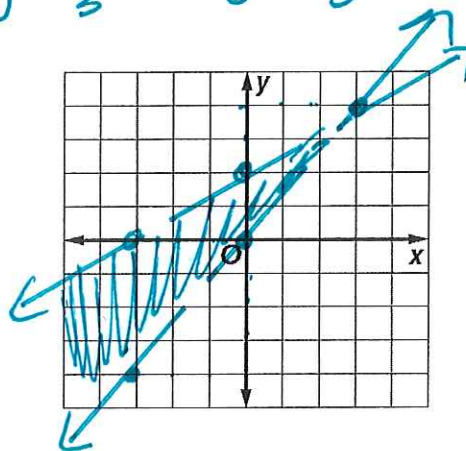
3.  $y \leq 2x - 3$   
 $y \leq -\frac{1}{2}x + 2$



4.  $x + y > -2$  and  $3x - y \geq -2$   
 $y > -x - 2$      $y \leq 3x + 2$

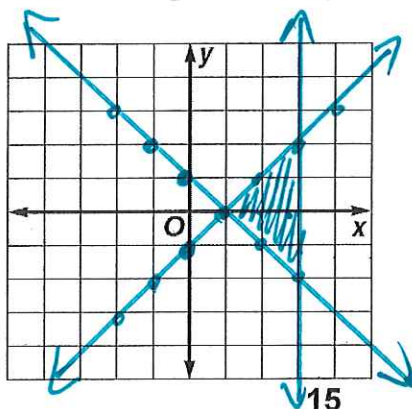


5.  $3y > 4x$  and  $2x - 3y > -6$   
 $y > \frac{4}{3}x$      $y < \frac{2}{3}x + 2$



Find the coordinates of the vertices of the triangle formed by each system of inequalities.

7.  $y \geq 1 - x$   
 $y \leq x - 1$   
 $x \leq 3$



vertices:  $(1, 0)$   
 $(3, 2)$   
 $(3, -2)$